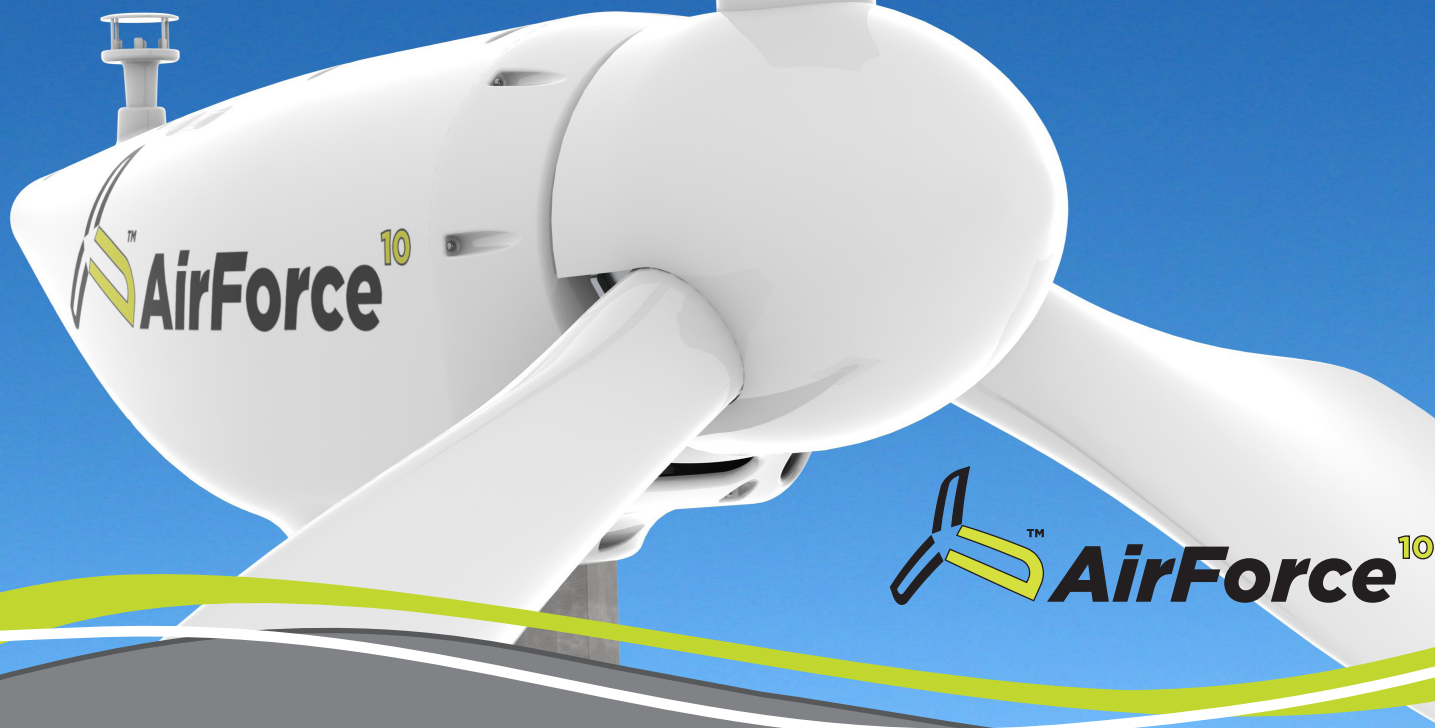


FUTUREENERGY



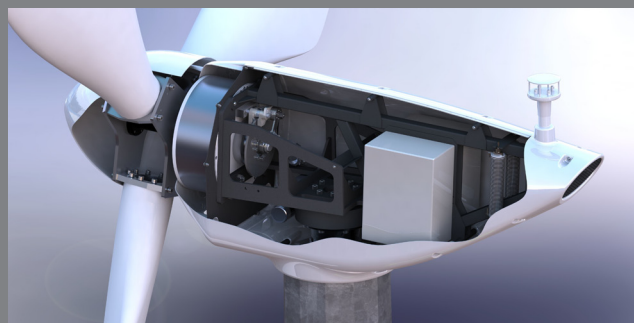
10KW UPWIND TURBINE



**The best 10 kilowatt wind turbine in its class.
Designed and manufactured by FuturEnergy in Warwickshire, UK**

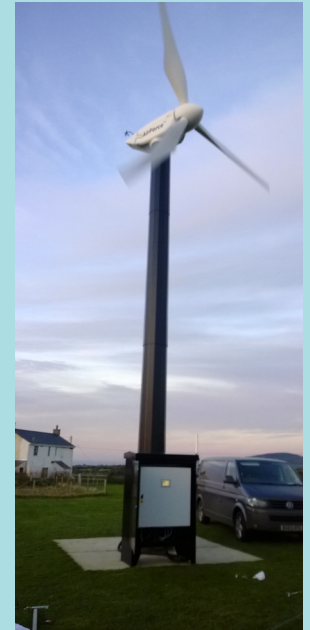
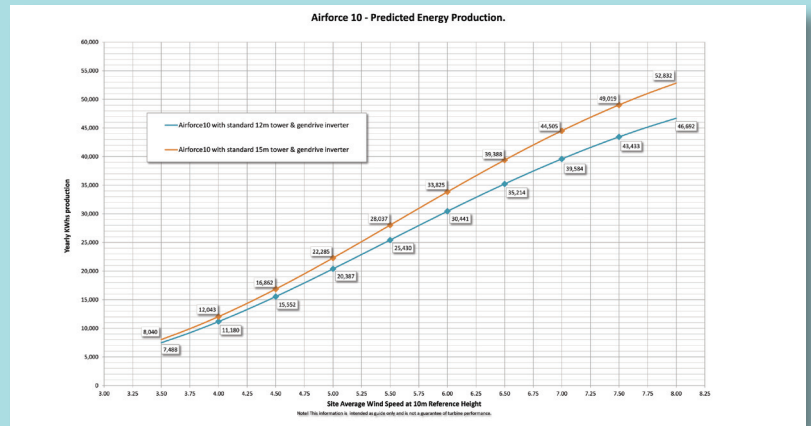
MAIN FEATURES

- 60 Pole purpose designed permanent magnet generator (UK manufactured)
- Power output: 10KW @ 10m/s, 12KW Max Single Phase, 13KW Max 3 Phase.
- 8m Diameter rotor
- Fully automated control system
- Hydraulically driven yaw and braking systems
- SIL Level 3 safety system
- All UK design & manufacture



FULLY AUTOMATED CONTROL SYSTEM

- SIL Level 3 independent safety control monitoring
- Intelligent wind tracking adapts to wind conditions
- Multiple rotor speed limiting systems
- Ground level control panel housing electronics, inverter & hydraulics
- Remote monitoring and data logging
- Hydraulically raised tower
- All UK designed & manufactured
- GenDrive inverter (UK design & manufacture)
- Compliant to EN 64100 standards
- Single (12KW), split phase & 3 phase (13KW) options
- Long warranty and service contract available by FuturEnergy Ltd



TOWER

Tubular Galvanised Steel Tapered Tower.

Available in 12, 15, and 18 meter heights dependent on site requirements.

Raised and lowered via double hydraulic rams

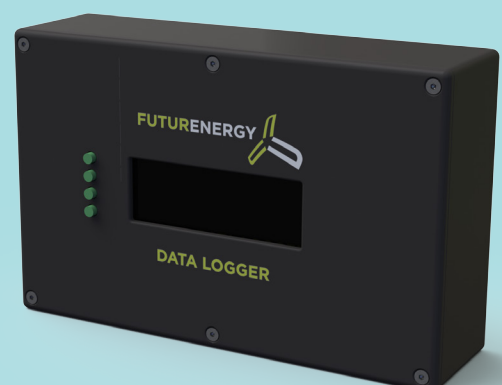
Concrete foundation with high-tension steel cage reinforcement

FUTUREENERGY DATA LOGGER

The FuturEnergy Data Logger can tell you all you need to know about your sites wind conditions when connected to an anemometer, and if used in conjunction with our Grid-Tied, Battery Charging or Water Heating solutions can tell you the performance of your turbine too.

The data logger has an optional internal modem allowing for SMS reporting. Send a text to the Data Logger and you'll receive a text reply showing useful site conditions and turbine performance data. In SMS mode the Data Logger will only respond to mobile numbers programmed, ensuring only authorised mobiles can access the data.

- Records total power produced from your turbine
- Instantaneous power readings
- Data logged to SD card
- Records wind speed, direction, RPM and power
- Send and Receive SMS messages on daily power generation/wind speed
- User configurable logging parameters
- Reports % battery charge with battery charging solution
- Reports Immersion temperature with water heating solution



FuturEnergy Ltd

Ettington Park Business Centre
Stratford upon Avon CV37 8BT

T +44 (0)1789 450280

F +44 (0)1789 450916

E sales@futureenergy.co.uk

W www.futureenergy.co.uk