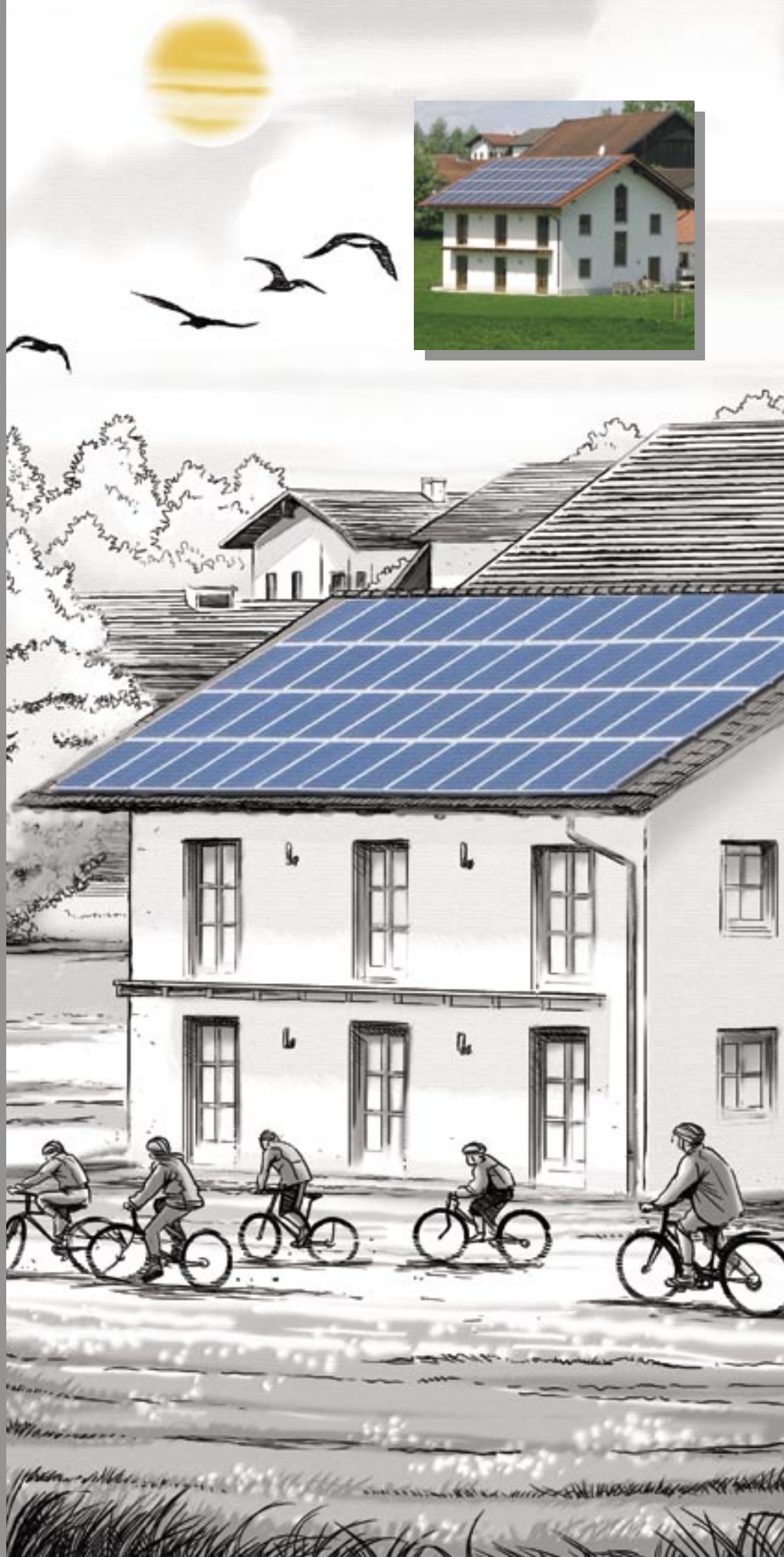
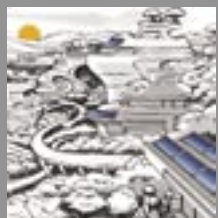




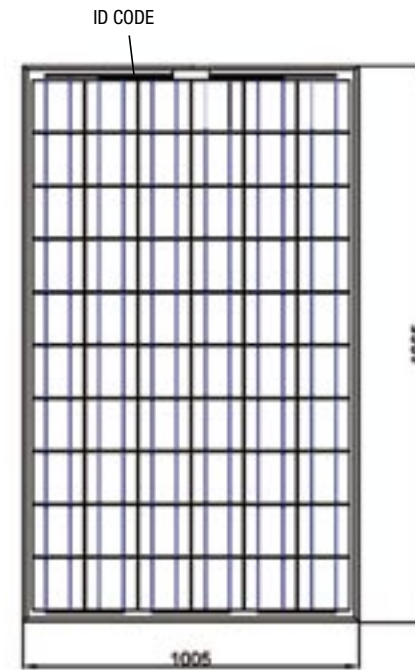
PHOTOVOLTAIC MODULE PX60



PHOTOVOLTAIC MODULE PX60



FRONT



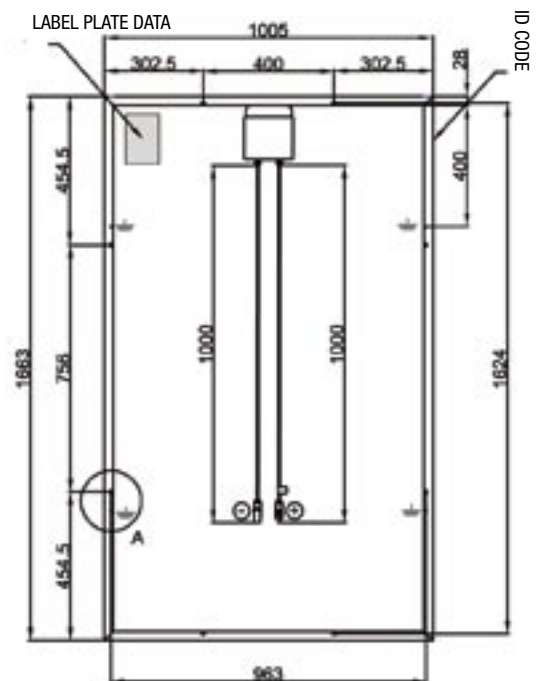
CERTIFICATIONS



- Qualified, IEC 61215
- Safety tested, IEC 61730
- Heavy Snow Load tested
- Periodic Inspection



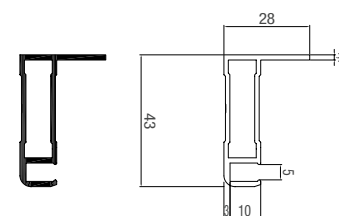
BACK

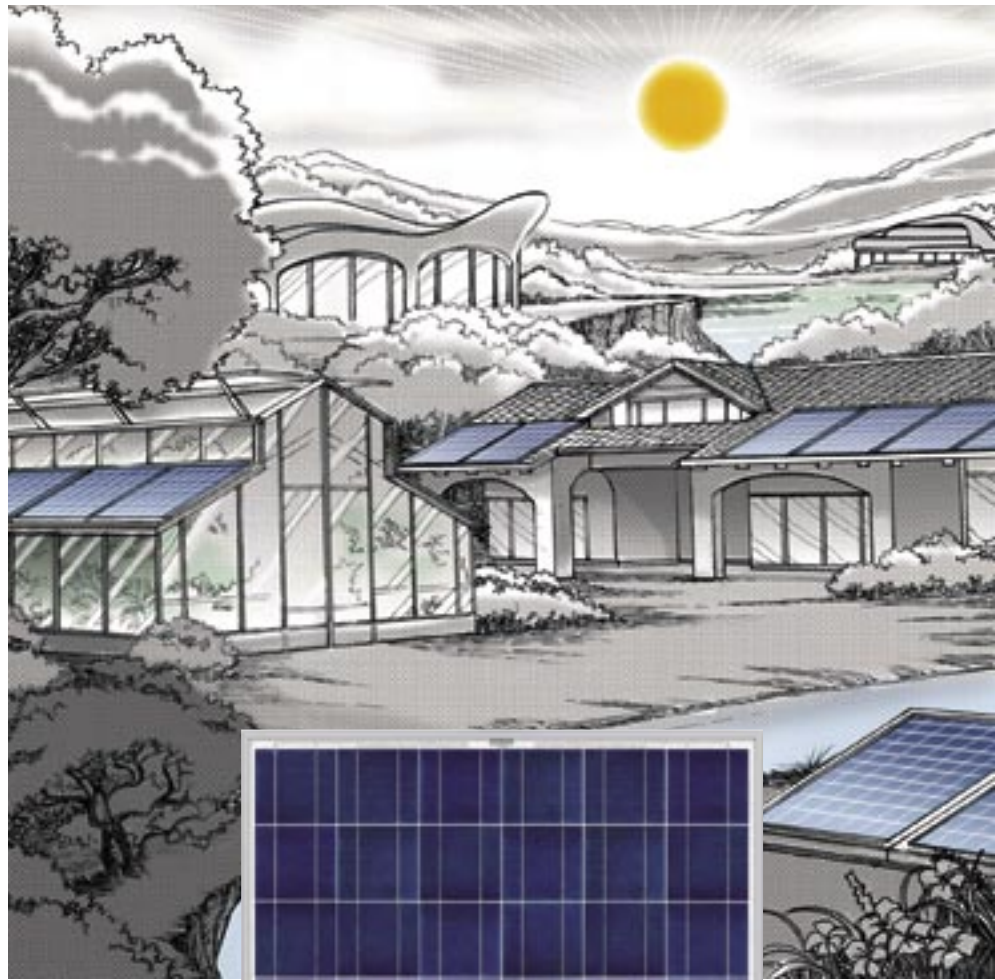


ASSOCIATIONS



PROFILE





PX60
220Wp

classic

Solarday
Photovoltaic Module Manufacturer

PX60
220Wp

classic

PHOTOVOLTAIC MODULE PX60

MECHANICAL SPECIFICATIONS

	With frame	Frameless*
Length	1.665 mm	1.657 mm
Width	1.005 mm	997 mm
Module depth	43 mm	5 mm
Glass thickness	4 mm	4 mm
Area	1,67 m ²	1,65 m ²
Active area	1,46 m ²	1,46 m ²
Weight	22 kg	19,5 kg
Maximum mechanical load	540 kg/m ²	240 kg/m ²

PV SOLAR CELLS

Dimension	6"
Shape	Square
Quantity	60
Layout	10 x 6
Frontal glass	Tempered, prismatic glass with low iron contents
Cell encapsulation	E.V.A. (Ethylen-Vinyl Acetate)
Back-sheet**	PVF/PET/PVF or PET/PET
Frame	Extruded anodised aluminium
Junction box	IP65 class with 3 by-pass diodes, n.2 cables Ø 4mm with IP67 polarized connectors included

MULTICRYSTALLINE SILICON

ELECTRICAL SPECIFICATIONS

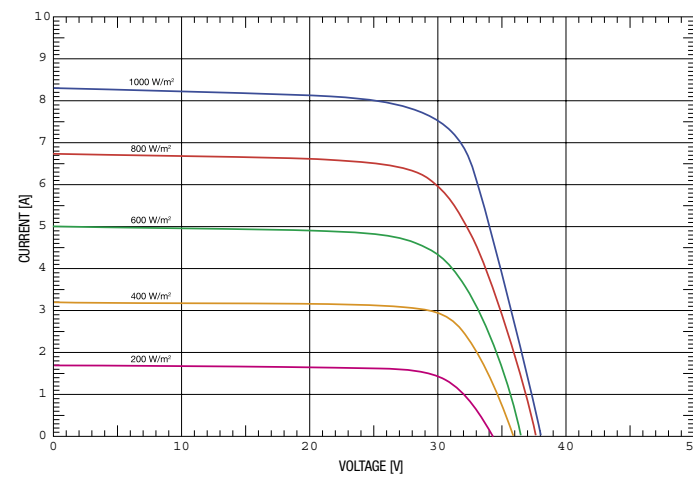
		PX60-220
Module class peak power [\pm 5Wp]	Wp	220
Rated voltage [Vmpp]	V	28,5
Rated current [Impp]	A	7,72
Open circuit voltage [Voc]	V	37,1
Short circuit current [Isc]	A	8,29
Module efficiency [%]	module area	13,15
	active area	15,07
Module productivity	W / m ²	131
Area per kWp	m ² / kWp	7,6
Maximum system voltage	V _{DC}	1000
Reverse current load	A	20

*Frameless on request

** White, black, transparent on request

GRAPHS OF ENERGETIC BEHAVIOUR

PHOTOVOLTAIC MODULE PX60
(performance at different solar radiations)



The above values are measured by laboratories certified IEC 17025

Temperature coefficient [Isc]	% / °C	0,063
Temperature coefficient [Voc]	% / °C	-0,330
Temperature coefficient [Pmpp]	% / °C	-0,479
NOCT [\pm 3,5 °C]	°C	48

The values refer to the standard test conditions (STC: irradiation 1000 W/m², spectrum AM 1,5, temperature 25°C)

- Fire class: C
- Temperature range: from -40°C to +85°C
- Hail impact: diameter of 25 mm with impact speed of 83 km/h
- Modules output: not less than 90% in 10 years, and 80% in 25 years
- 10 years warranty for manufacturing defects



Solarday
Photovoltaic Module Manufacturer

SOLARDAY S.p.A. factory and offices:

Via delle Industrie 27 - 20883 Mezzago (Monza Brianza) Italia - Tel. (+39) 039 6883188 - (+39) 039 6020617 - E-mail: info@solarday.it - Web: www.solarday.it