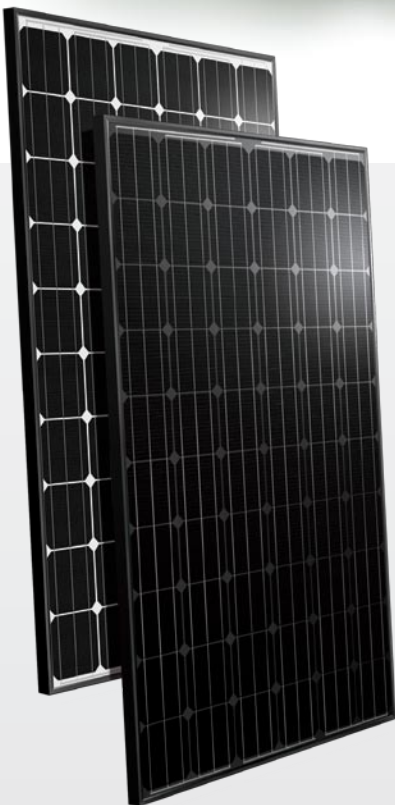
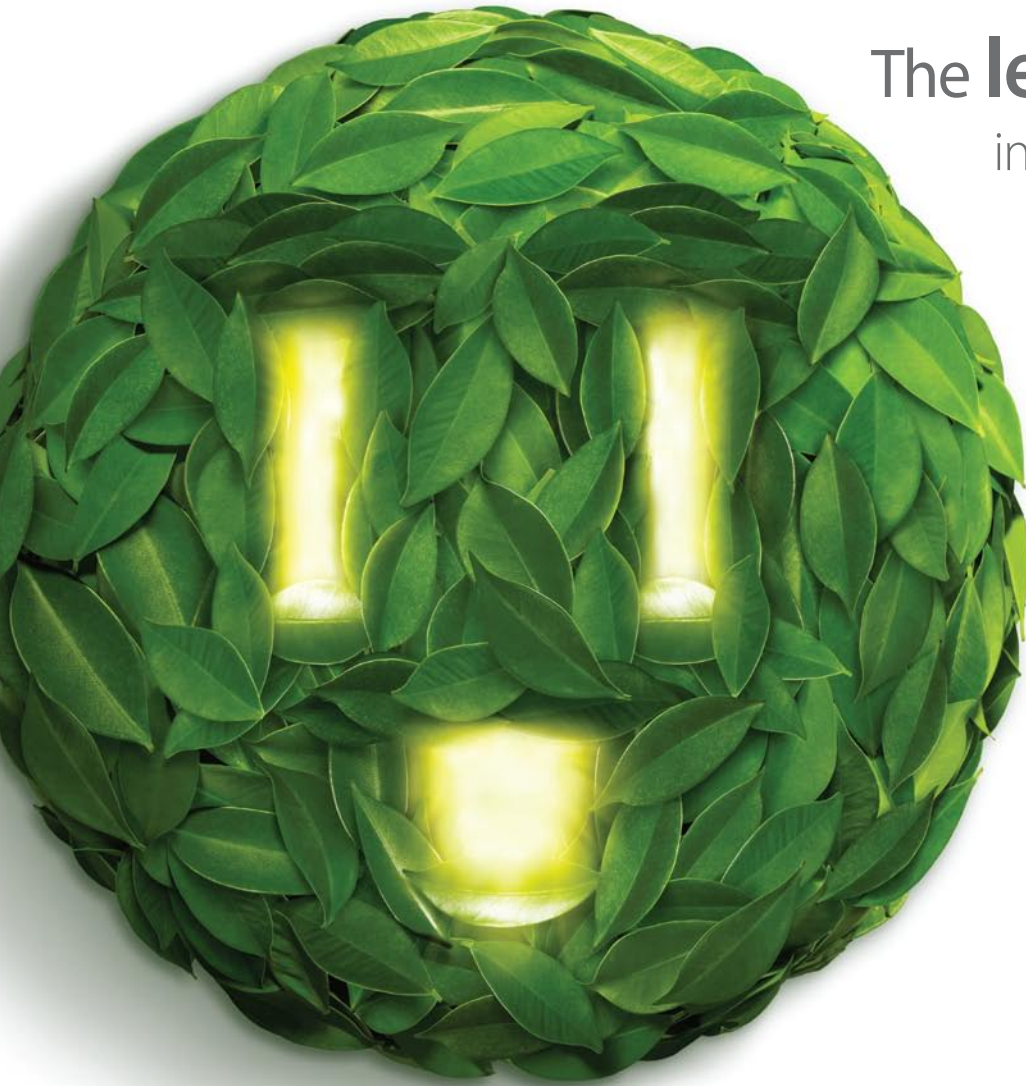


The **leading** force  
in **green** power



## GreenTriplex PM250M00

Mono-crystalline Photovoltaic Module

**245W**  
**265W**

### Power Range

245-265 Wp



### Highly Strengthened Design

Module complies with advanced loading tests to meet 5400 Pa loading requirements



### Light Trapping Capability

Superior performance under weak light conditions such as dawn, dusk, and cloudy days



### 3 Busbar Design

Enhances current transmission and module reliability

Optional



### Self-clean

AUO unique photocatalyst treatment decomposes surface contamination, reduces O&M cost and increases performance

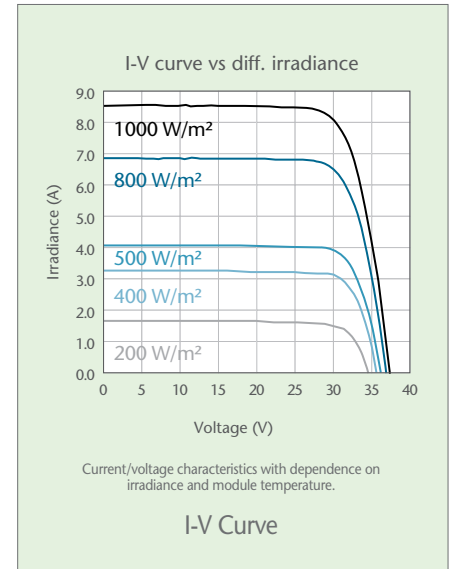
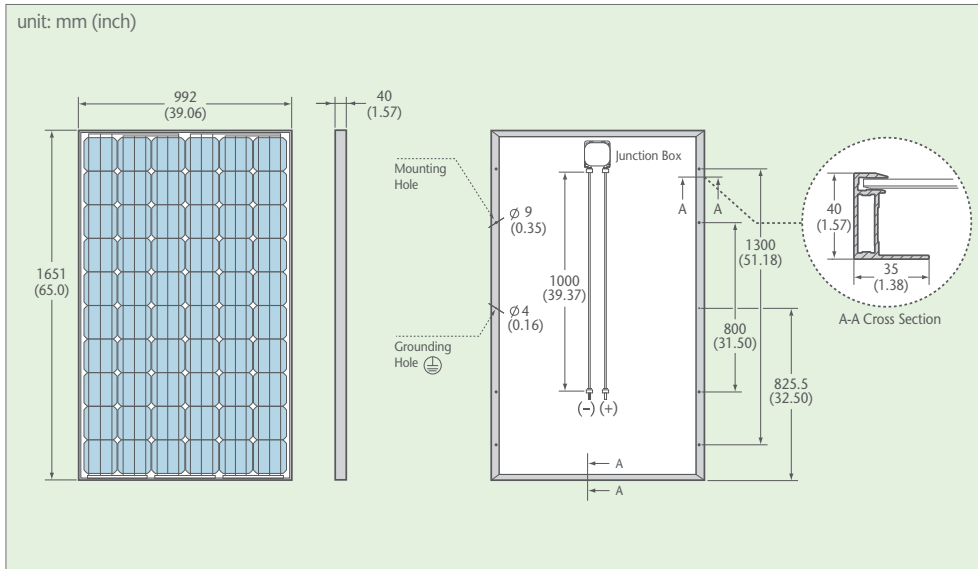


### AC Photovoltaic

Integrated with a Micro-inverter, Module has high and stable AC power output via panel level MPPT



# GreenTriplex PM250M00 (245-265 Wp)



## Electrical Data

Typ. Nominal Power P <sub>N</sub>	245 Wp	250 Wp	255 Wp	260 Wp	265 Wp
Typ. Module Efficiency	14.70%	15.30%	15.60%	15.90%	16.20%
Typ. Nominal Voltage V <sub>mp</sub> (V)	30.78	30.82	30.86	30.90	30.95
Typ. Nominal Current I <sub>mp</sub> (A)	8.09	8.22	8.34	8.46	8.58
Typ. Open Circuit Voltage V <sub>oc</sub> (V)	37.80	37.86	37.92	37.98	38.04
Typ. Short Circuit Current I <sub>sc</sub> (A)	8.60	8.66	8.72	8.78	8.84
Maximum Tolerance of P <sub>N</sub>	0 / +3%				

• Above data are the effective measurement at Standard Test Conditions (STC)  
 • STC: irradiance 1000W/m<sup>2</sup>, spectral distribution AM 1.5, temperature 25 ± 2° C, in accordance with EN 60904-3

• The given electrical data are nominal values which account for basic measurements and manufacturing tolerances of ±10%, with the exception of P<sub>N</sub>. The classifications is performed according to P<sub>N</sub>  
 • Black backsheet is utilized for power range 245-260W; White backsheet is for 250-265W

## Temperature Coefficient

NOCT	46 ± 2° C
Typ. Temperature Coefficient of P <sub>N</sub>	-0.48% / K
Typ. Temperature Coefficient of V <sub>oc</sub>	-0.36% / K
Temperature Coefficient of I <sub>sc</sub>	0.03% / K

• NOCT: Normal Operation Cell Temperature, measuring conditions: irradiance 800W/m<sup>2</sup>, AM 1.5, air temperature 20° C, wind speed 1m/s

## Operating Conditions

Operating Temperature	-40...+80° C
Ambient Temperature Range	-40...+45° C
Max. System Voltage IEC/UL	1000 V / 600 V
IP Protection Level	IP 65
Serial Fuse Rating	15 A
Maximum Surface Load Capacity	Tested up to 5400 Pa according to IEC 61215 (advanced test)

## Mechanical Characteristics

Dimensions (L x W x H)	1651 x 992 x 40 mm (65.01 x 39.06 x 1.57 inches)
Weight	19.3 kg (42.5 lbs)
Front Glass	High transparent solar glass (tempered), 3.2 mm (0.13 inches)
Cell	60 monocrystalline solar cells, 156 mm x 156 mm (6" x 6")
Cell Encapsulation	EVA
Back Sheet	Composite film, black / white
Frame	Anodized aluminum frame, black
Junction Box	Junction box with 3 bypass diodes
Cables	1 x 4 mm <sup>2</sup> (0.04 x 0.16 inch <sup>2</sup> ), length: each 1.0 m (39.37 inches)
Connector Type	Tyco plug

## Warranties and Certifications

Product Warranty	Maximum 5 years for material and workmanship
Performance Guarantee	Guaranteed output of 90% for 10 years and 80% for 25 years
Certifications	According to IEC 61215, IEC 61730 and UL 1703 guidelines *

\* Please confirm other certifications with AUO official dealers



**AU Optronics Corporation**

No. 1, Li-Hsin Rd. 2, Hsinchu Science Park, Hsinchu 30078, Taiwan

Tel: +886-3-500-8899 Email: solar@auo.com www.AUO.com www.AUOsolar.com

**AUO Green Solutions**  
Printed with Soy Ink

